

SUPERLOCK DIGITAL RAPIDRESET DOUBLE-SIDED



- G 10 second code change** - Update the code fast with the code change button without taking the lock off the gate.
- G Easy to fit** - Slim 70mm (2-3/4") wide lock case along with adjustable and removable latchbolt ensure easy installation. **No power or battery needed.**
- G Easy to operate handle** - Designed particularly for those with mobility issues who find gripping and turning difficult.
- G Highly Secure** - The latchbolt moves 15mm (5/8") ensuring the bolt enters deep into the gatepost.
- G Anti-climb handle** - This lock is also fitted with an anti-climb handle to prevent intruders using the handle as a foot hold to climb the gate.
- G Long-lasting & durable** - Purpose-engineered for outdoor use with anti-corrosion and stainless steel construction.

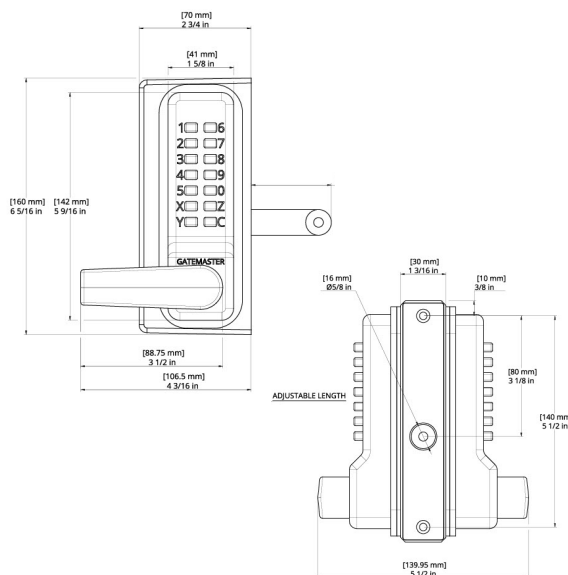
PRODUCT DETAILS

Product code:	Description:
BDGRR1030	To fit 10-30mm (1/2" - 1-1/4") gate frames
BDGRR4060	To fit 40-60mm (1-1/2" - 2-1/4") gate frames



INSTALLATION

1. Drill 2 x 9mm (3/8") holes at 140mm (5 1/2") centres for fixing bolts provided.
2. Drill 18mm (3/4") clearance hole for the latchbolt at 60mm (2 3/8") centres up from the bottom fixing hole.
3. Fix the handles to the square spindles so that the handles are facing away from the latchbolt and secure using the hex key supplied.
4. Hold the lock against the back of the box section and screw on the latchbolt through the larger hole.
5. Lock the latchbolt with the hex key supplied by inserting the hex key into the end of the latchbolt.
6. Fix lock in place using the stainless steel bolt support plate and the countersunk screws provided. Ensure the latchbolt moves freely.
7. Fix strike plate by either welding or screw fixing onto the gate post.
8. **MAINTENANCE** Every 6 months, lubricate the latchbolt with light oil. Annually, dismantle the lock and spray mechanism with light oil.
9. If you have any problems with the latch bolt sticking, drill out the latch bolt hole as this should alleviate the issue.



VISIT GATEMASTERLOCKS.COM FOR MORE INFORMATION

