

ELECTRIC RELEASE, MORTICE, HEAVY DUTY



- This heavy duty electric release with an integral switch can be used to confirm that a gate is closed
- Converts to fail safe (unlocks when power fails) or fail secure (remains locked when power fails)
- Robust product with a stainless steel faceplate and a deep locking tongue to allow for more gate tolerance

PRODUCT DETAILS

Product code:	Description:
ERHDM	Heavy duty mortice release with monitor

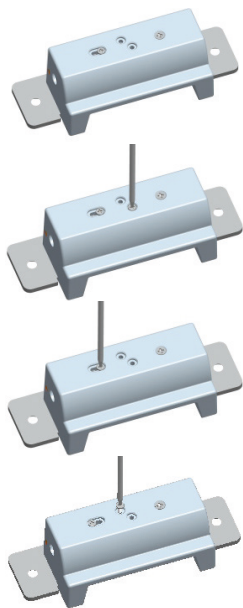
Dimensions:	(L x W x D)
Lock body (incl. lip):	85 x 35 x 44mm
Short faceplate:	124 x 32 x 3mm
Long faceplate:	165 x 32 x 3mm

Voltage: 12VDC
Current: 250mA nominal
Feature: Fail Secure(NO)
Fail Safe(NC)

Red: +ve 12Vdc
Black: -ve 12Vdc
White: COM
Green: N.O.
Yellow: N.C.



Mode Change



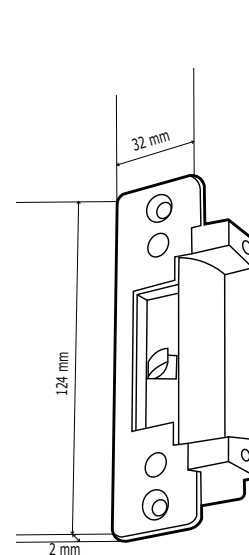
The unit is supplied in "Fail-Secure" mode, as shown in the picture on the left. Changing the mode to "Fail-Safe" is an easy operation, moving the position of 2x screws at the back of the unit - please follow the steps shown below:

STEP 1
Remove the locking screw from the fail-secure position as shown

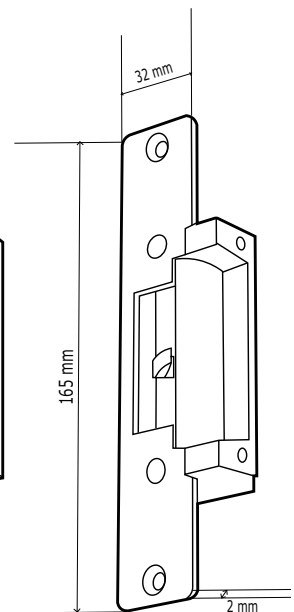
STEP 2
Loosen the adjustable screw, and slide it to the opposite end of the oblong hole. Tighten the adjustable screw.

STEP 3
Replace the locking screw into the fail-safe position as shown

Option 1 - short faceplate



Option 2 - long faceplate



VISIT GATEMASTERLOCKS.COM FOR MORE INFORMATION

